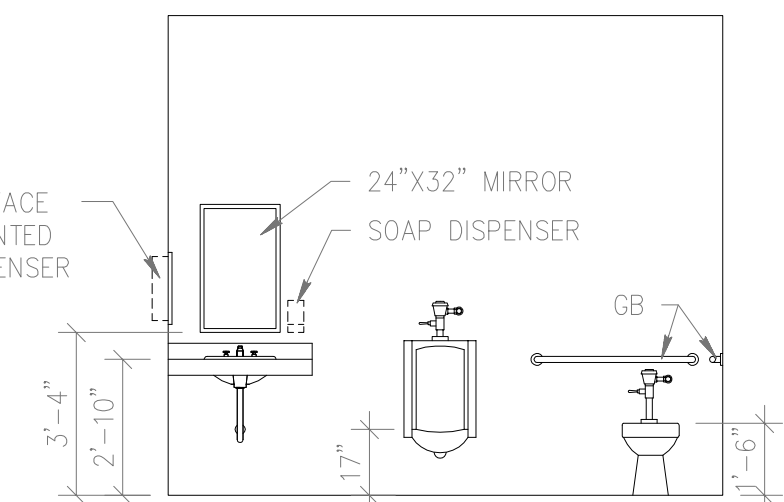
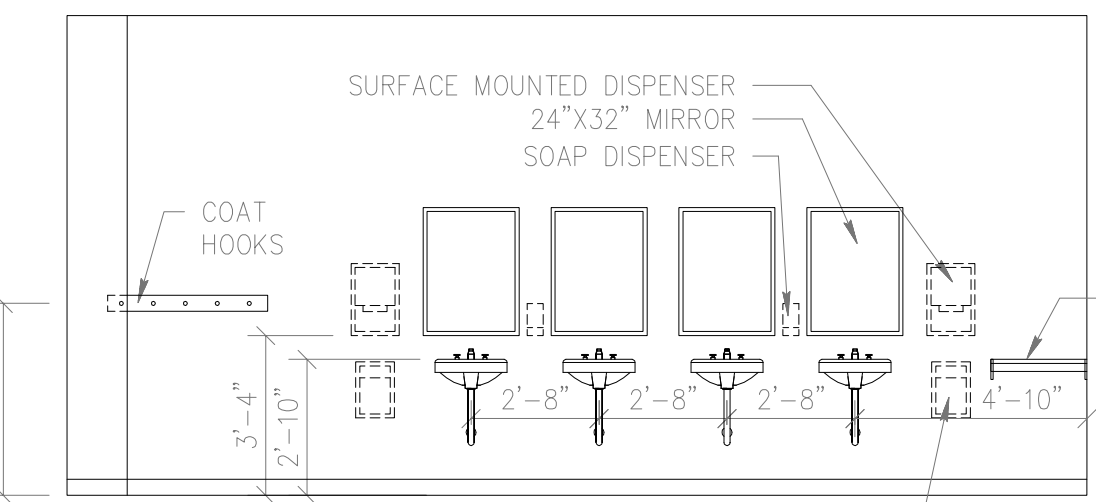


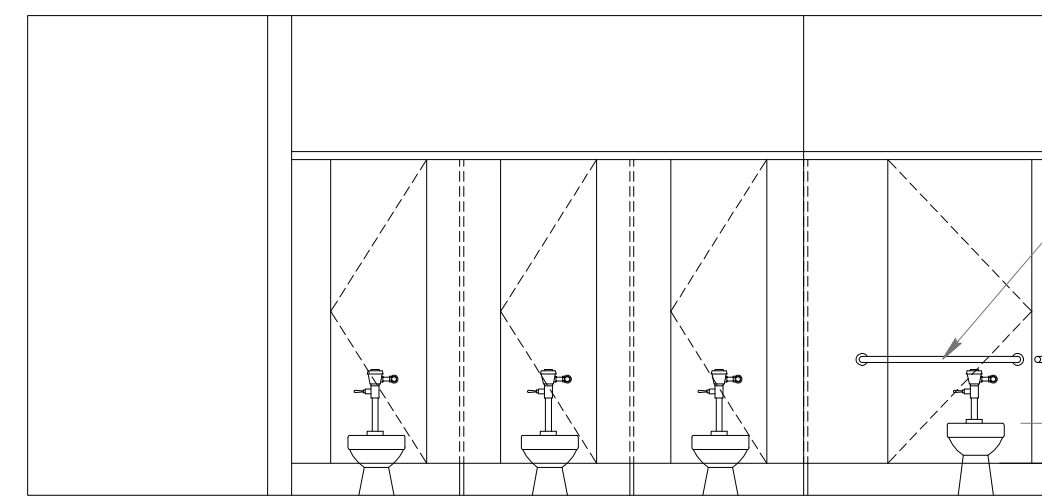
6 INT. ELEV./WOMENS  
A32 1/4" = 1'-0"



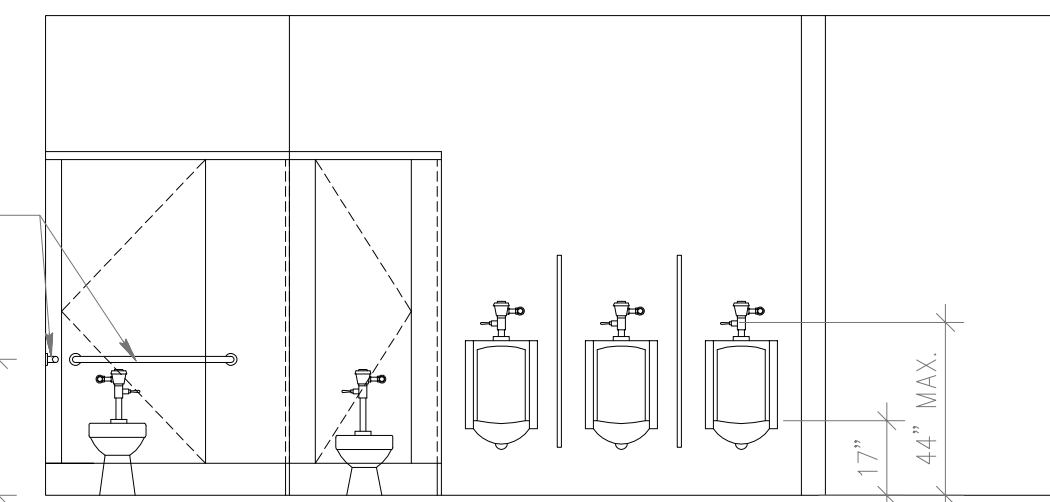
7 INT. ELEV./MENS  
A32 1/4" = 1'-0"



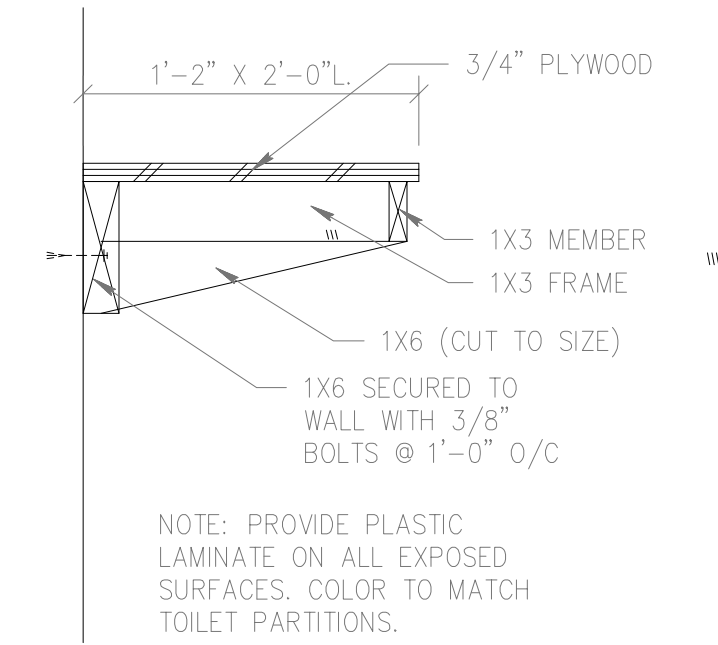
3 TYPICAL LAVATORY ELEVATIONS  
A32 1/4" = 1'-0"



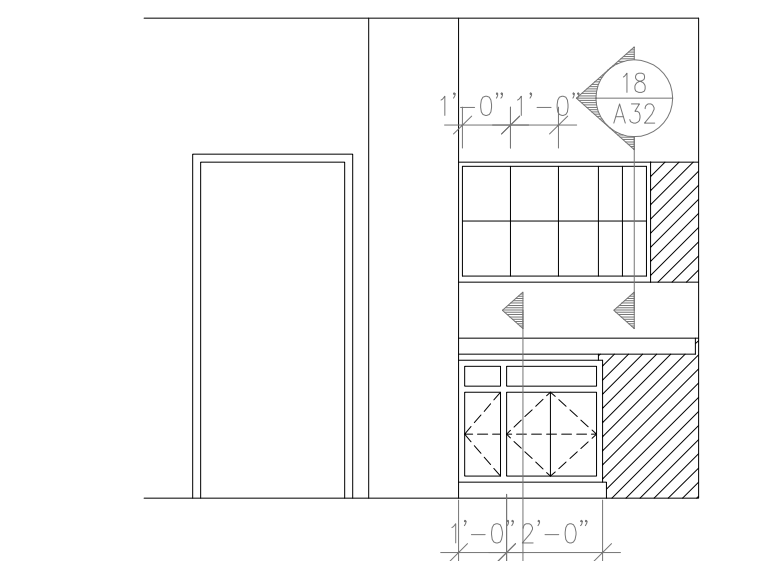
4 INTERIOR ELEVATION/WOMENS  
A32 1/4" = 1'-0"



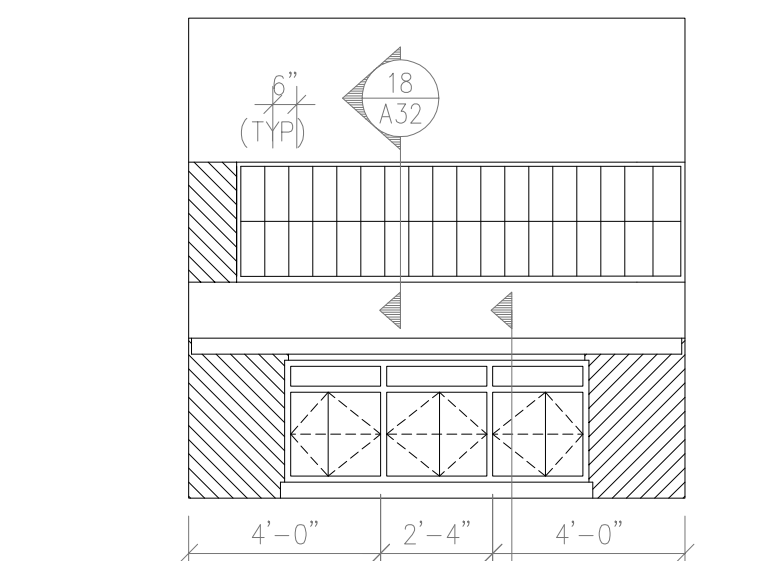
5 INTERIOR ELEVATION/MENS  
A32 1/4" = 1'-0"



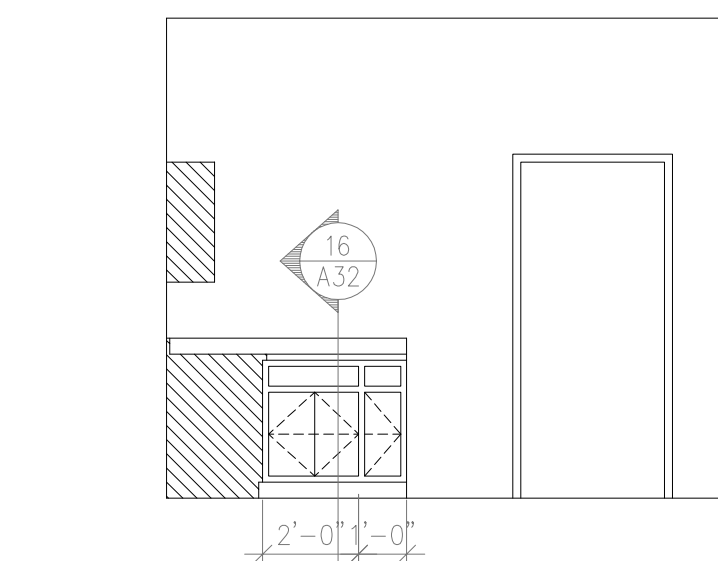
22 BOOK SHELF DETAIL  
A32 1 1/2" = 1'-0"



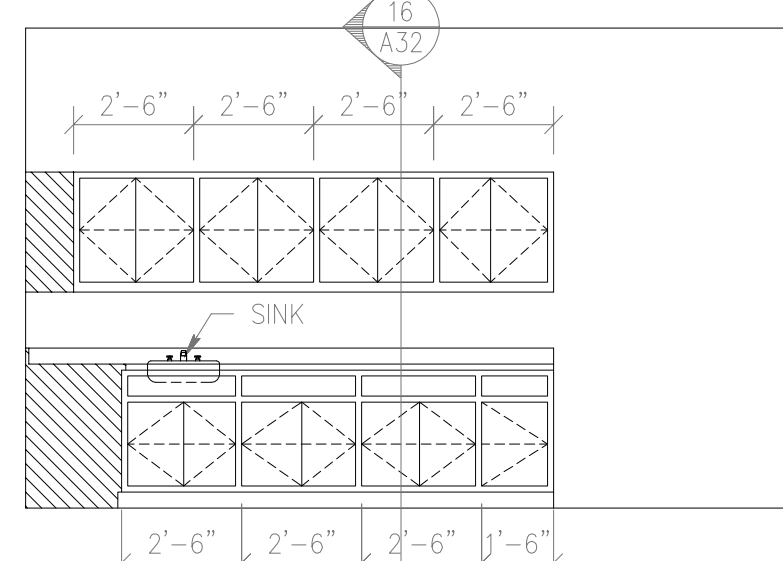
10 INT. ELEV./COPY ROOM  
A32 1/4" = 1'-0"



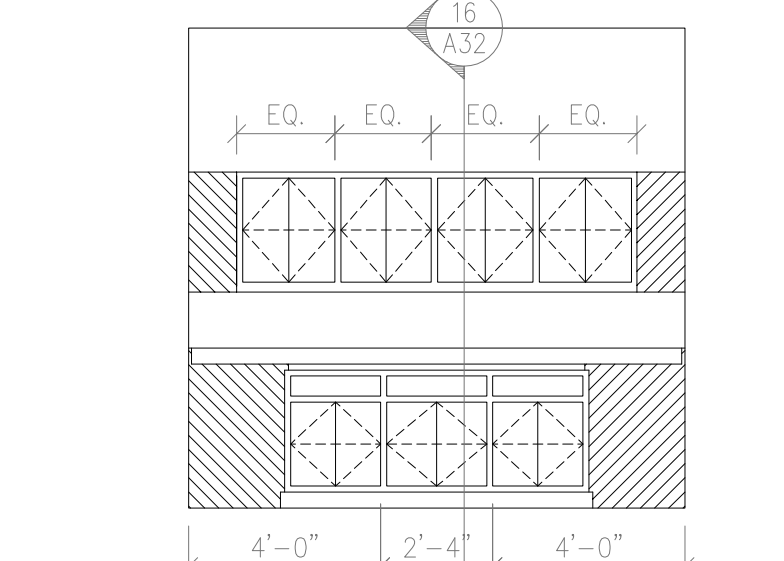
11 INT. ELEV./COPY ROOM  
A32 1/4" = 1'-0"



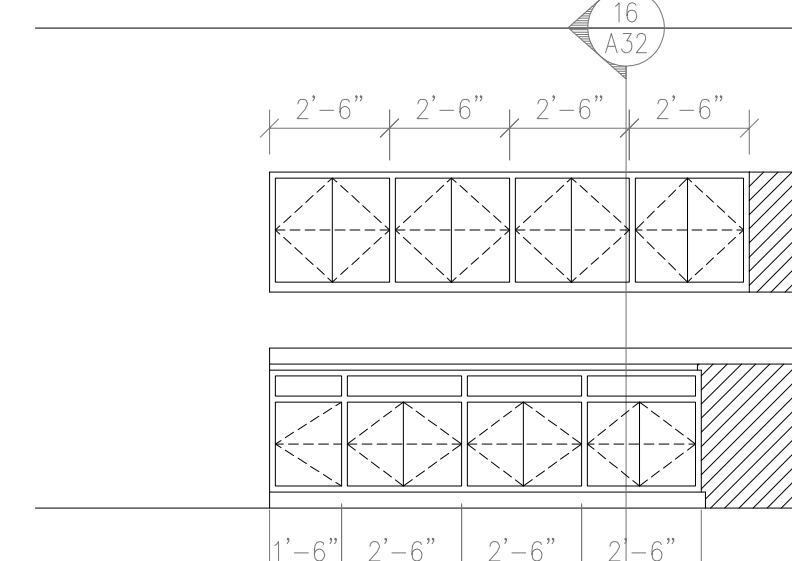
12 INT. ELEV./COPY ROOM  
A32 1/4" = 1'-0"



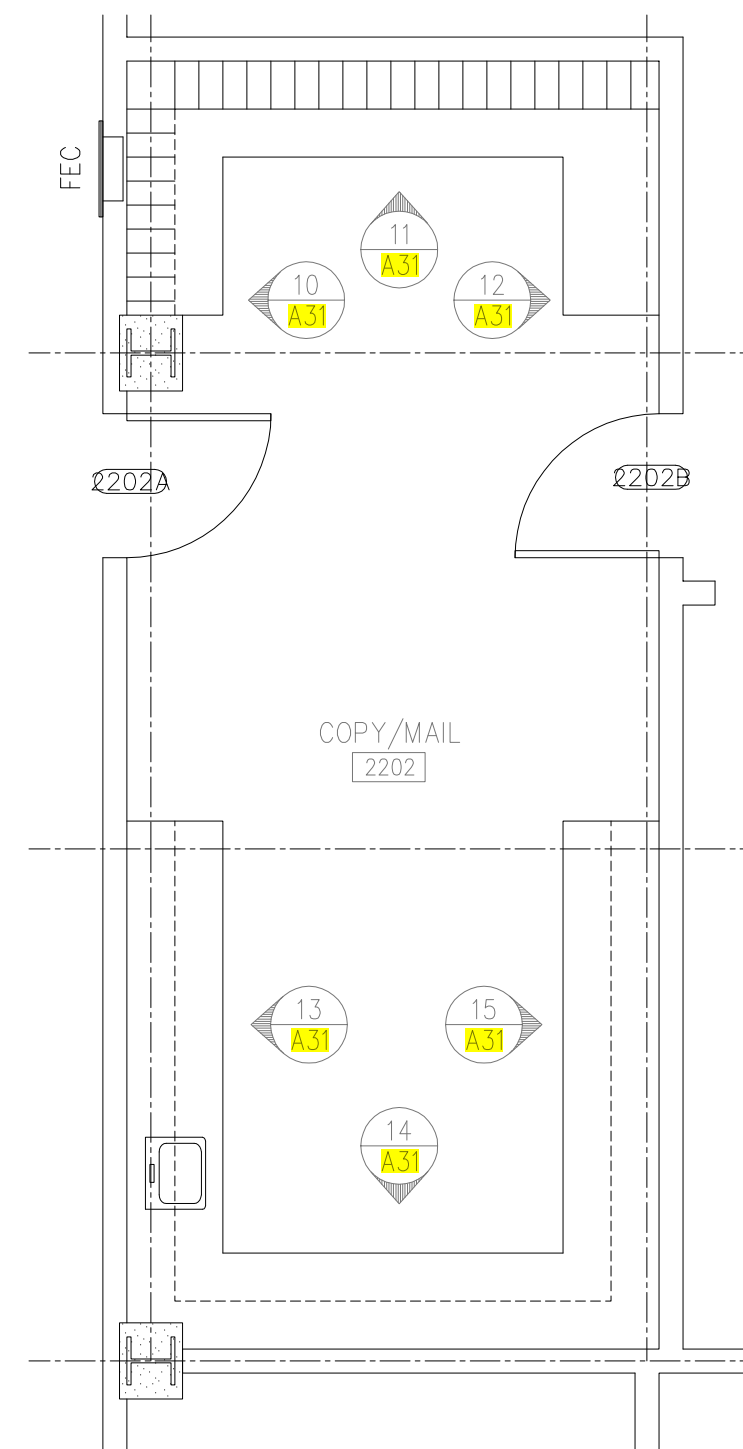
13 INT. ELEV./COPY ROOM  
A32 1/4" = 1'-0"



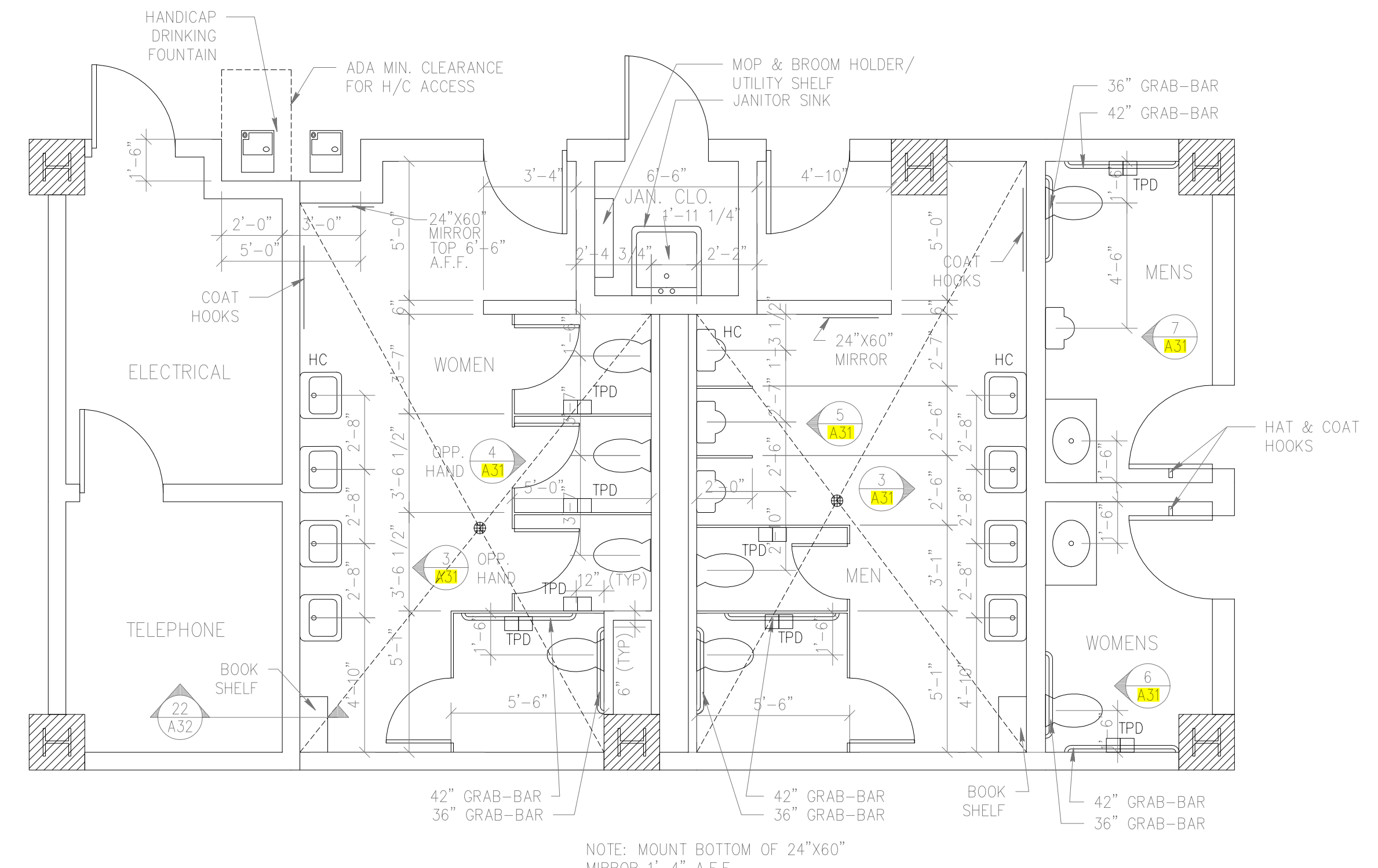
14 INT. ELEV./COPY ROOM  
A32 1/4" = 1'-0"



15 INT. ELEV./COPY ROOM  
A32 1/4" = 1'-0"

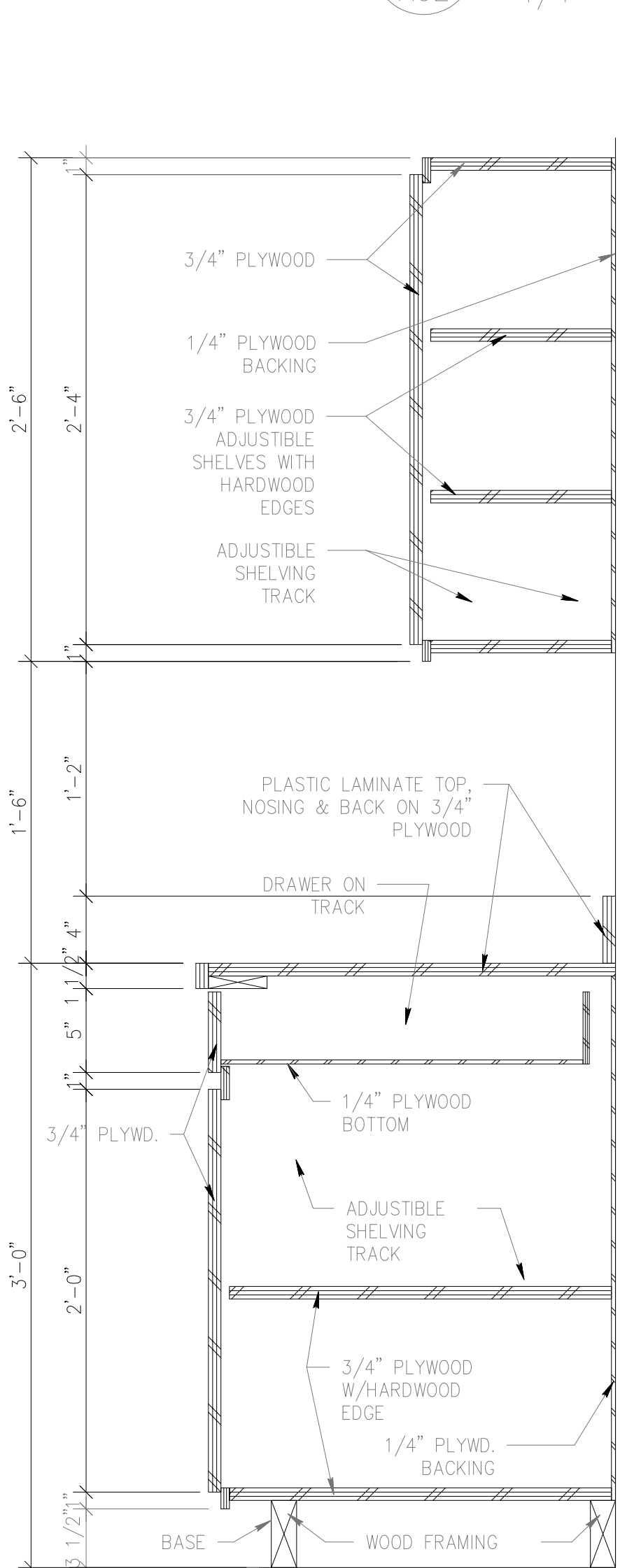


8 ENLARGED COPY RM. (2202) PLAN  
A32 1/4" = 1'-0"

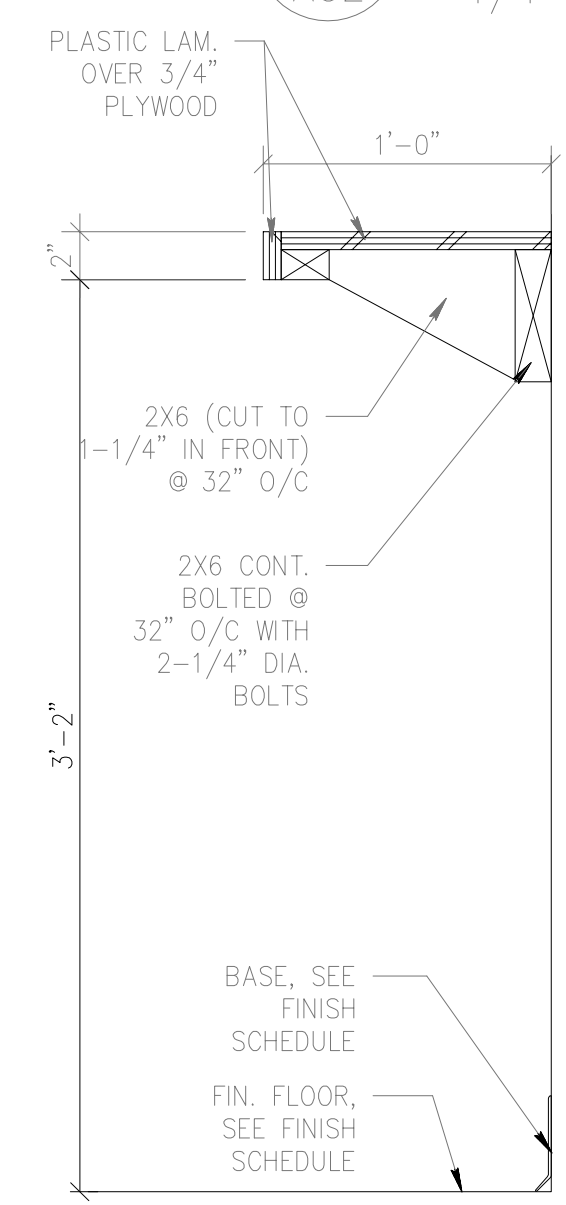


1 ENLARGED TYPICAL EAST TOILET SUITE  
A32 1/4" = 1'-0"

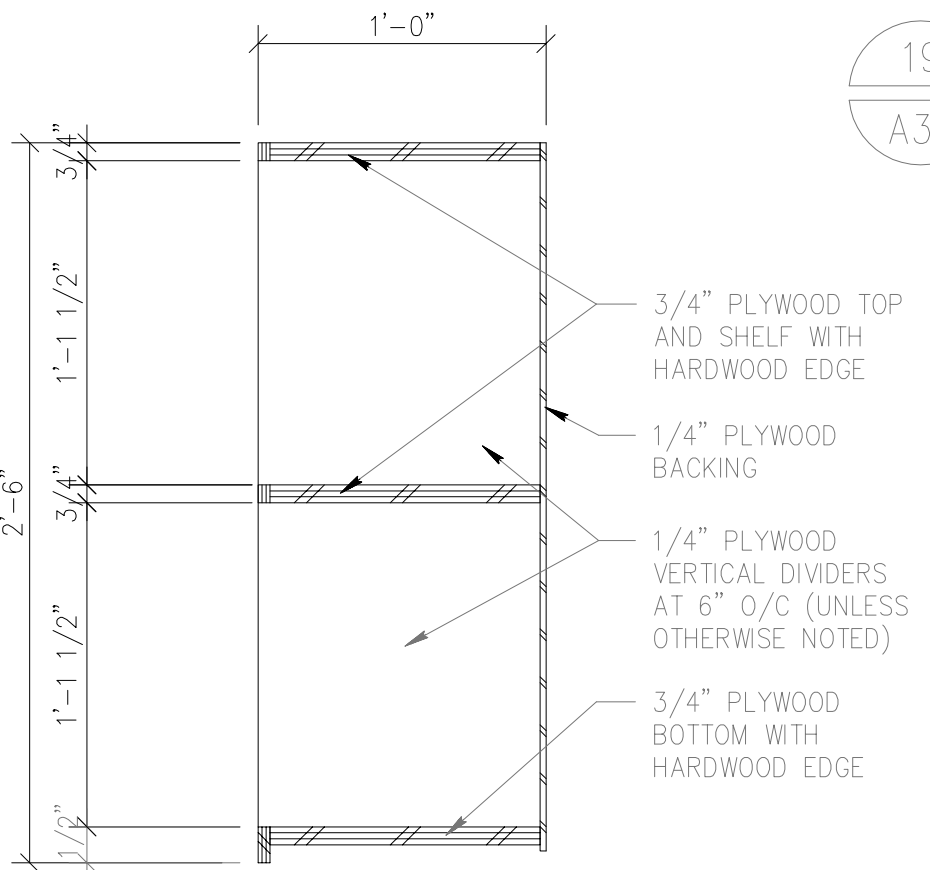
SPACES REPRESENTED BY THIS DRAWING:  
1213, 1223, 1224, 1225, 1226, 1233, 1242  
2213, 2223, 2224, 2225, 2226, 2227, 2248



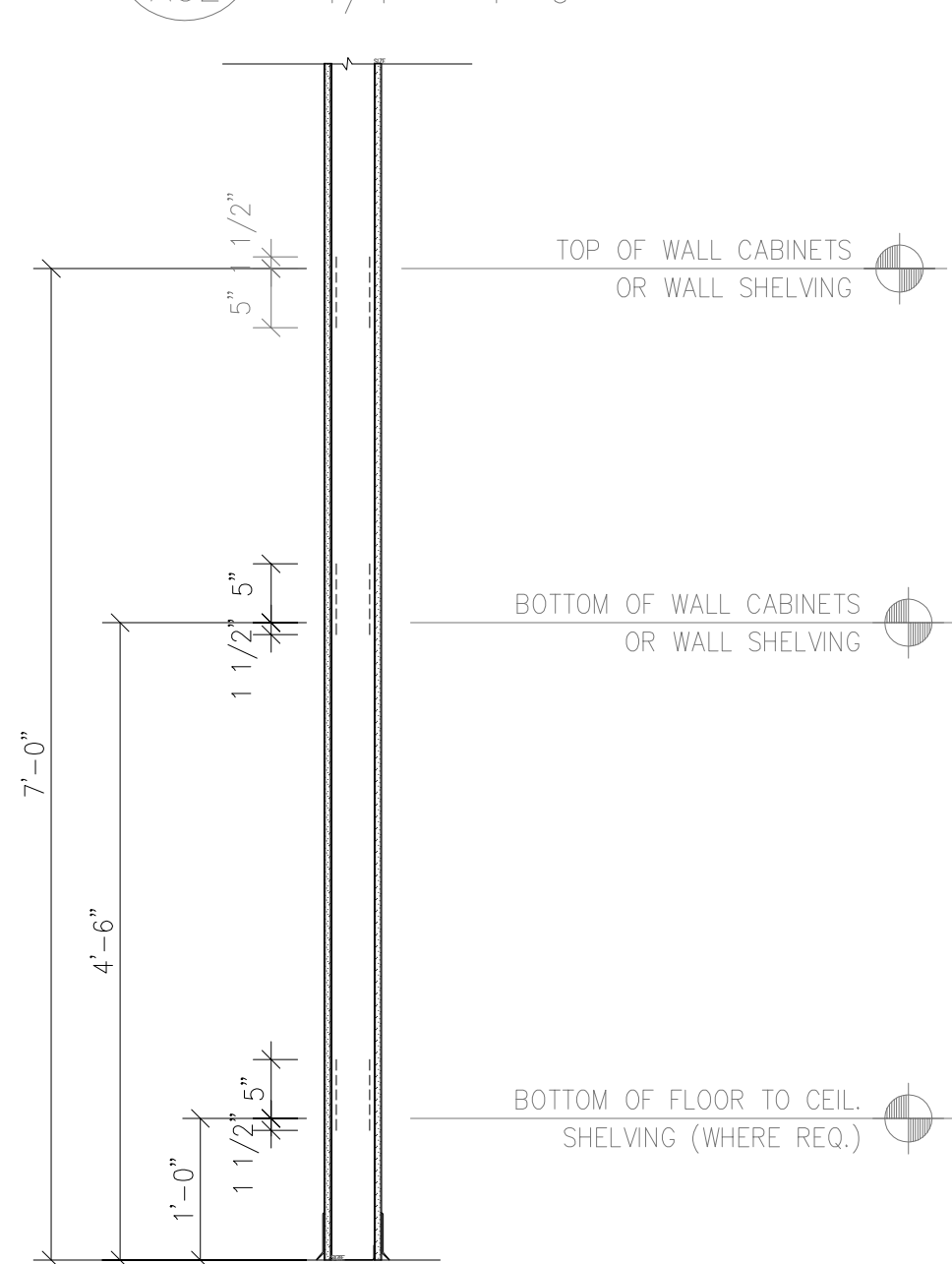
16 TYPICAL CABINET SECTION  
A32 1 1/2" = 1'-0"



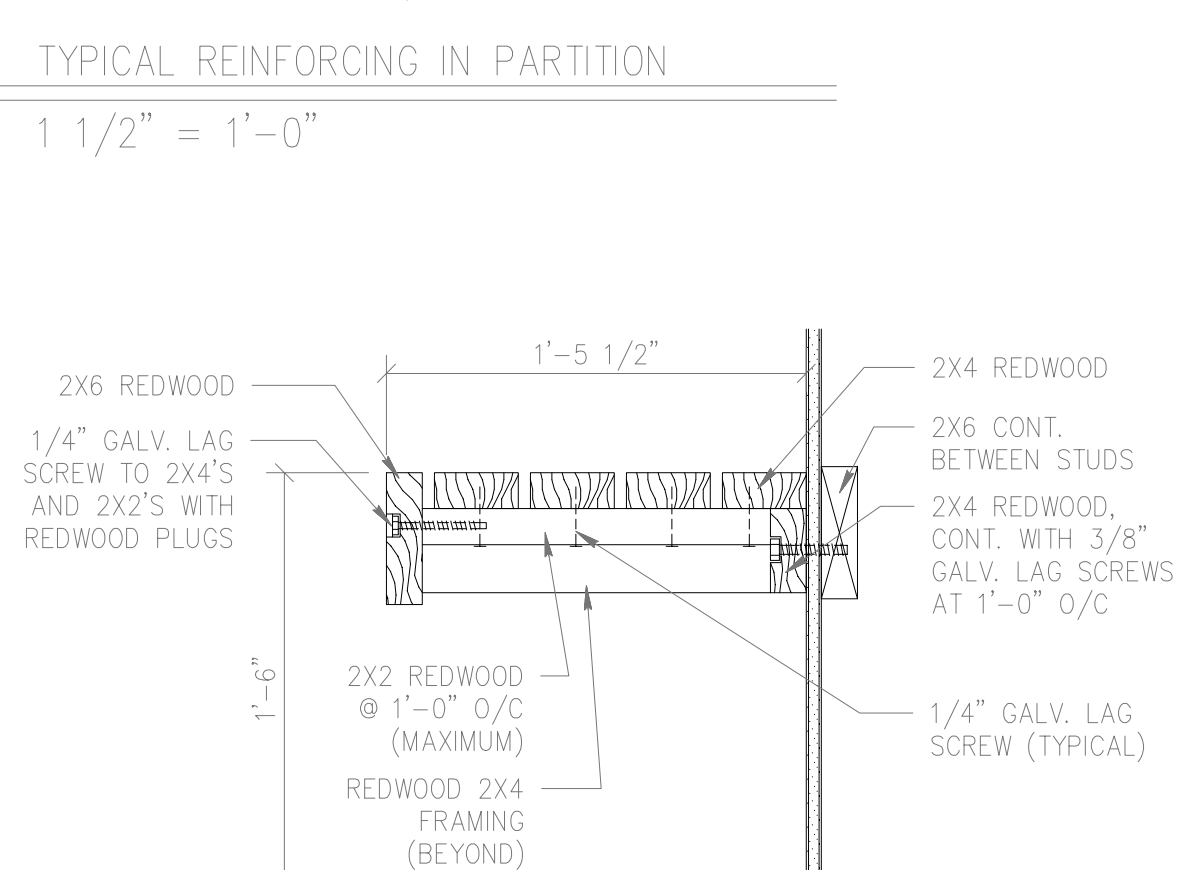
17 SHELF DETAIL  
A32 1 1/2" = 1'-0"



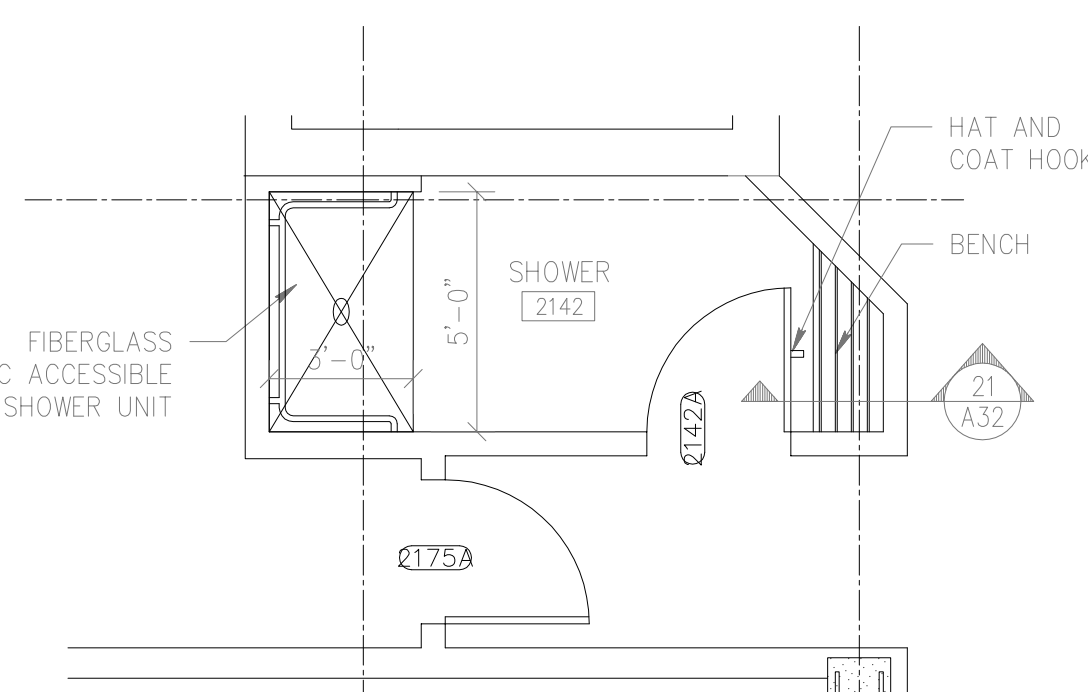
18 WALL HUNG MAIL UNIT  
A32 1 1/2" = 1'-0"



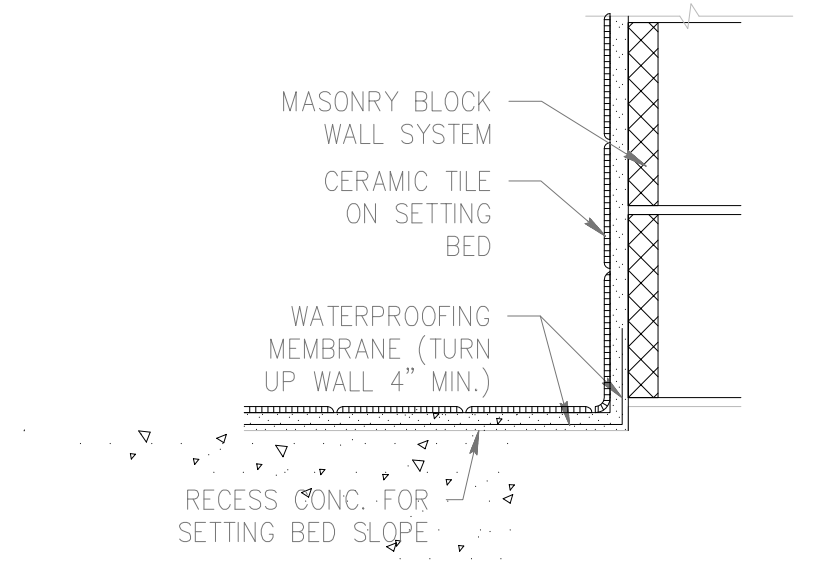
19 TYPICAL REINFORCING IN PARTITION  
A32 1 1/2" = 1'-0"



21 SHOWER SEAT DETAIL  
A32 1 1/2" = 1'-0"

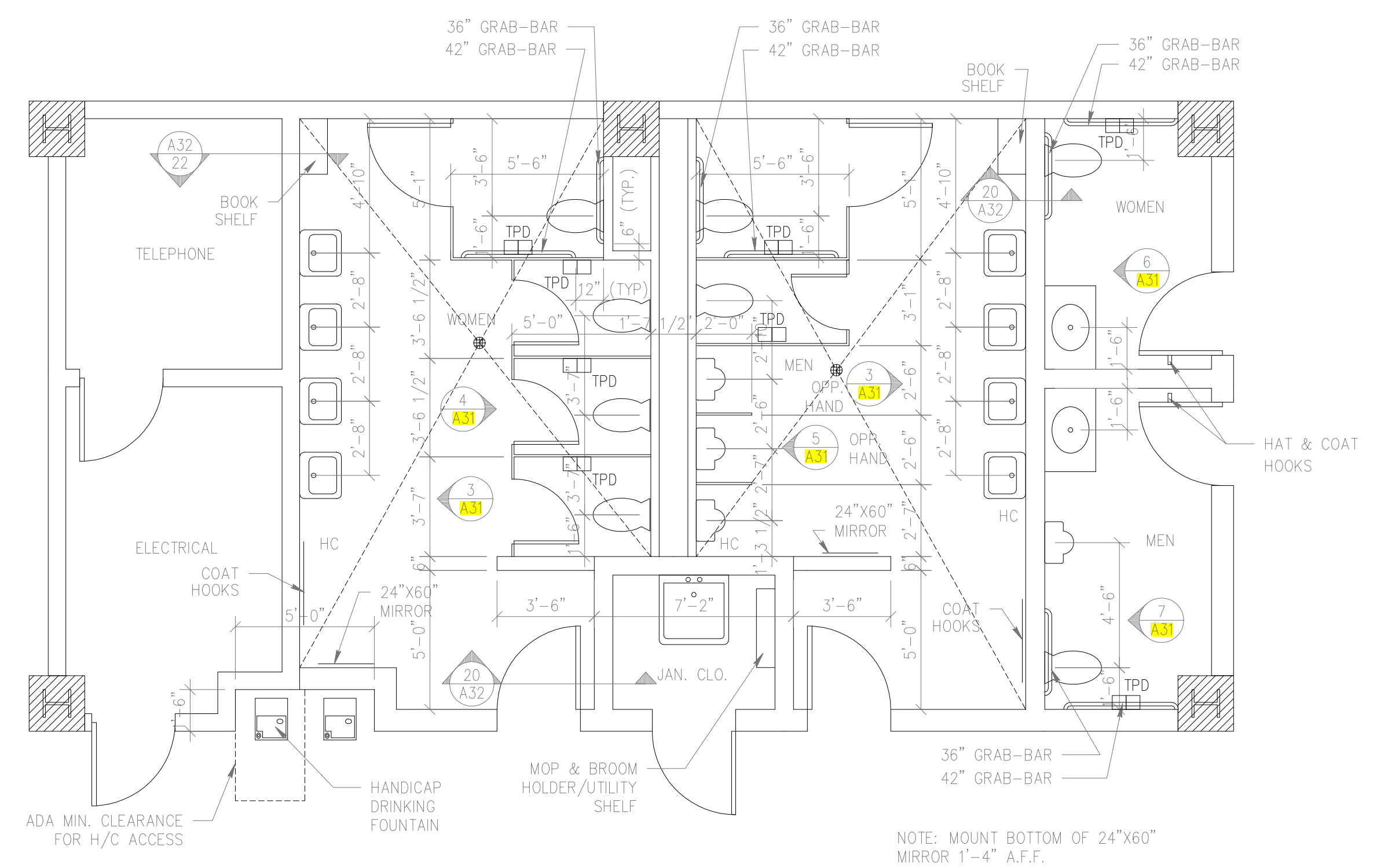


9 ENLARGED SHOWER (2142) PLAN  
A32 1/4" = 1'-0"



20 TOILET FLOOR/WALL DETAIL  
A32 1 1/2" = 1'-0"

NOTE: PROVIDE WATERPROOFING UNDER ALL SECOND FLOOR TOILETS.



2 ENLARGED TYPICAL WEST TOILET SUITE  
A32 1/4" = 1'-0"

SPACES REPRESENTED BY THIS DRAWING:  
1052, 1060, 1073, 1074, 1075, 1076, 1077  
2052, 2060, 2061, 2062, 2063, 2064, 2065

DRAWING REVISIONS:		
NO.	DATE:	REMARKS:

DATE:	05/16/94
PROJECT#:	9305
DESIGNED BY:	W.G.F.
DRAWN BY:	C.J.S.
CHECKED BY:	T.W.L.
CHECKED BY:	

SHEET NO.:	A32
------------	-----